

Report Title: Annual Community Consultation Report

Coal Title: Exploration Licence 6243

Original Grant Date: 21 May 2004

Expiry Date: 21 May 2029

Reporting Period: 21 May 2022 - 20 May 2023

Project Name: Narrabri South

Title Holder: Narrabri Coal Pty Ltd and others

Project Operator: Narrabri Coal Operations Pty Ltd

Date of Report: 6 February 2024

Author: Brent Baker

Author's Contact Details: Whitehaven Coal Limited
10 Kurrajong Creek Rd, Baan Baa NSW 2390

Email: BrentBaker@whitehavencoal.com.au

Telephone: 02 6794 4167

Verification Signature:



Executive Summary

EL 6243 is located approximately 30 km south of the town of Narrabri, west of the Kamilaroi Highway between the localities of Turrawan and Baan Baa. EL 6243 has an area of 6,940 ha and is situated mainly on farmland and State Forest. The licence is located adjacent to and south of the Narrabri Mine (ML1609).

A renewal application was submitted on 17 May 2019 and was granted on 29 September 2023.

There were no exploration activities undertaken in EL6243 during the reporting period.

There were no community complaints over the past year specifically related to exploration or other activities in EL 6243.

Mining lease (ML) 1839 was granted on 13 September 2022 and covers a portion of EL 6243.

TABLE OF CONTENTS

1.	LOCATION AND ACCESS	4
2.	TITLE, LAND OWNERSHIP, COMMUNITY GROUPS & GOVERNMENT	4
3.	CONSULTATION COMPLETED DURING THE REPORTING PERIOD	6
3.1	Community Consultative Committee	6
3.2	Engagement with Landowners	7
3.3	Engagement with Government Agencies	7
4.	OUTCOMES OF CONSULTATION AND ACTIONS TAKEN	7
5.	PROPOSED CONSULTATION IN THE FUTURE	7
6.	ENQUIRIES AND COMPLAINTS RECEIVED DURING THE REPORTING PERIOD	7
7.	REFERENCES	7

1. LOCATION AND ACCESS

Exploration Licence (EL) 6243 is located approximately 30 km south of the town of Narrabri and is situated mainly on farmland and State Forest west of the Kamilaroi Highway between the localities of Turrawan and Baan Baa (Figure 1). EL 6243 has an area of approximately 6,940 ha and measures approximately 7 km by 16.5 km. The licence is located adjacent (South) to the Narrabri Mine (Mining Lease (ML) 1609). Primary access for exploration is via the Narrabri Mine main access gate.

2. TITLE, LAND OWNERSHIP, COMMUNITY GROUPS & GOVERNMENT

EL 6243 was originally granted on 21 May 2004. The exploration licence is held by a joint venture comprising:

Joint Venture Participant	Interest
Narrabri Coal Pty Ltd (NCPL) (a subsidiary of Whitehaven Coal)	70.0%
Upper Horn Investments (Australia) Pty Ltd	7.5%
Narrabri Coal Australia Pty Limited (a subsidiary of Whitehaven Coal)	7.5%
J-Power Australia Pty Ltd	7.5%
POSCO International Narrabri Investment Pty Ltd	5.0%
KORES Narrabri Pty Ltd	2.5%

The company Narrabri Coal Operations Pty Ltd (NCOPL) operate the Narrabri Mine and activities within EL6243 on behalf of the Narrabri joint venture.

On 18 January 2008 an area of 5,298 ha was excised from EL 6243 and granted to Narrabri Coal Pty Ltd as Mining Lease (ML) 1609, where an underground longwall mine is now operating. Part of EL 6243 overlaps ML 1609.

ML1839 was granted on 13 September 2022 and covers a portion of EL 6243. This ML relates to the Narrabri Mine Stage 3 Extension Project that is subject to approval by the Australian Government.

The tenement is in the Narrabri Local Government Area (LGA) and the North West Local Land Services (LLS) area. The Registered Aboriginal Parties (RAP's) are the Gomerioi Narrabri Aboriginal Corporation (GNAC) and the Narrabri Local Aboriginal Land Council (NLALC).

EL 6243 was renewed on 18 February 2015, for a term of five years ending 20 May 2019. A renewal application was submitted on 17 May 2019 for a period of 6 years and granted on 29 September 2023. The lease now expires 21 May 2029.

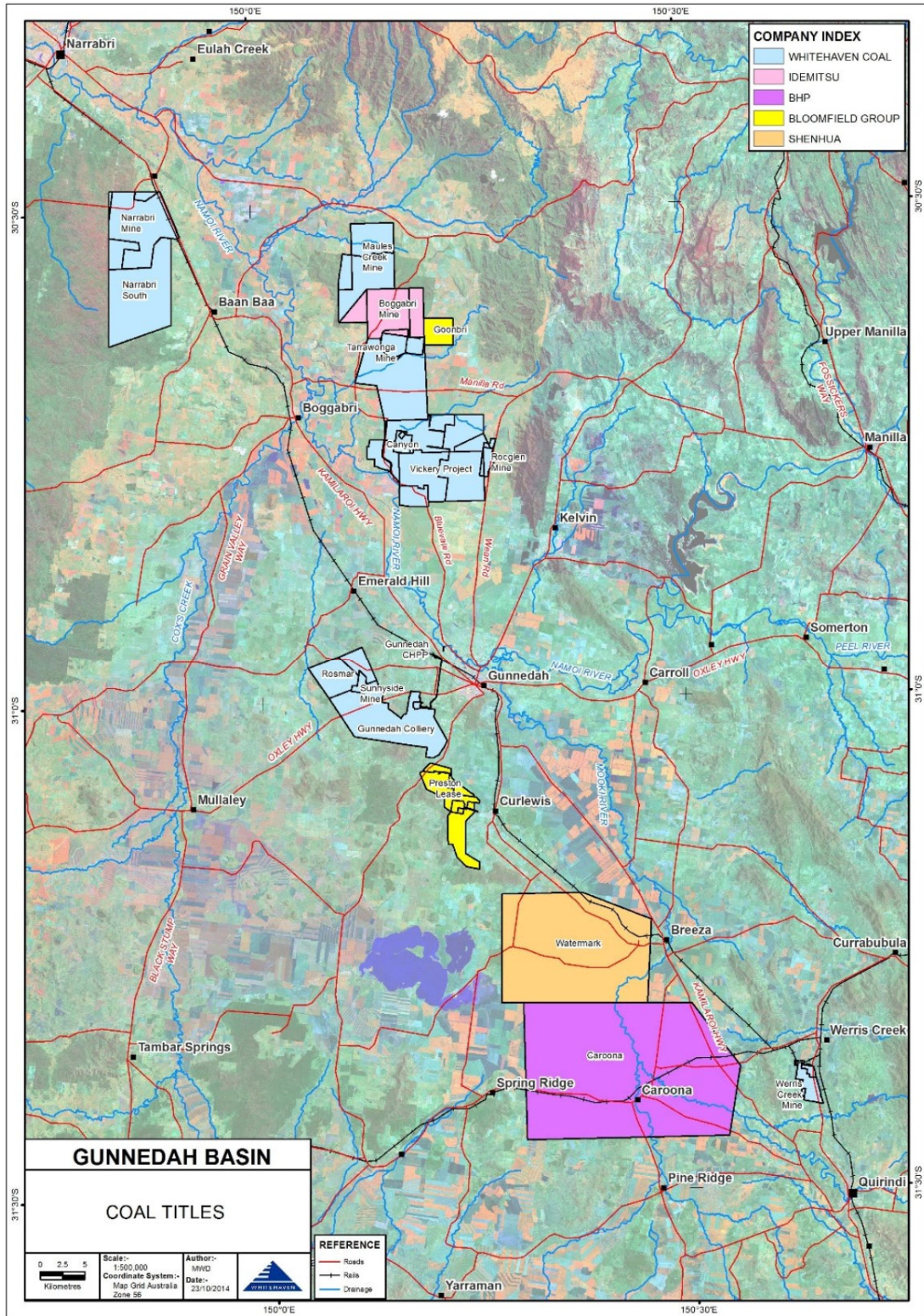


Figure 1: EL 6243 regional location map.

3. CONSULTATION COMPLETED DURING THE REPORTING PERIOD

No exploration drilling was undertaken within the EL boundary during the reporting period.

NCOPL engages with local residents and the broader community in a number of ways:

- A Community Consultative Committee (CCC) which meets quarterly, comprising of an independent chairperson, local community representatives and a representative from the Narrabri Shire Council;
- The Whitehaven Coal Limited website <http://www.whitehavencoal.com.au> has links to CCC minutes, the complaints register, newsletters and factsheets as well as environmental monitoring, reporting and approvals documentation; and
- Personal contact through community liaison and exploration personnel.

There was ongoing consultation associated with the Narrabri Mine Stage 3 Extension Project undertaken during the reporting period, which included areas of EL6243. This mainly related to make good agreements for impacted water bores.

3.1 Community Consultative Committee

The Narrabri Mine CCC is updated on exploration activities within EL 6243 at quarterly meetings when relevant. Table 1 provides a summary of items relevant to EL6243 that were discussed during Narrabri Mine CCC meetings during the reporting period; meeting minutes are available on the Whitehaven Coal website.

Table 1: Summary of Narrabri Mine CCC minutes (relating to Exploration activities) during the reporting period

Date of CCC Meeting	CCC member	Issue Raised	Narrabri Mine response
22 June 2022	Narrabri Coal Operations employee	Provided update on Stage 3 project approval process.	n/a
21 September 2022	Narrabri Coal Operations employee	Provided update on Stage 3 project approval process.	n/a
7 December 2022	Narrabri Coal Operations employee	Provided update on Stage 3 project approval process.	n/a
15 March 2023	Narrabri Coal Operations employee	Provided update on Stage 3 project approval process.	n/a

3.2 Engagement with Landowners

There were no exploration activities conducted during the reporting period, and no consultation undertaken with private landholders in relation to exploration activities on EL6243.

There were assessments and consultation with private landholders associated with the Narrabri Mine Stage 3 Extension Project undertaken during the reporting period.

3.3 Engagement with Government Agencies

NCOPL continued to engage with the Forestry Corporation of NSW in relation to access and use arrangements in Jacks Creek and Pilliga East State Forests. The Compensation Agreement with Forestry Corporation of NSW was executed on 06 December 2021.

EL 6243 is within the Narrabri Local Government Area, the Narrabri Shire Council (NSC) has been informed of exploration activities in the EL 6243 via the CCC as a member of NSC sits on this committee.

4. OUTCOMES OF CONSULTATION AND ACTIONS TAKEN

There were no outcomes of consultation requiring action.

5. PROPOSED CONSULTATION IN THE FUTURE

NCOPL is committed to continuing the process of community engagement and consultation in the following ways:

- Matters relating to the exploration licence will be notified to the CCC;
- Regular discussions with key local and State government agencies regarding proposed NCOPL exploration activities; and
- Continued implementation of the *Exploration code of practice: Community consultation (2023)*.

6. ENQUIRIES AND COMPLAINTS RECEIVED DURING THE REPORTING PERIOD

A register of feedback and complaints for exploration activities at Narrabri Mine is maintained by the Environmental Superintendent, as well as a record of community engagement. These records are available for inspection by the Department. There were no community complaints over the past year specifically related to exploration in EL 6243.

7. REFERENCES

Department of Regional NSW, *Exploration code of practice: Community consultation V2.1*, May 2023.

NSW Minerals Council, *NSW Minerals Industry Exploration Handbook*, December 2013.

Whitehaven Group Health, Safety, Environment and Communities Policy (WHC_POL-Health, Safety, Environment and Communities). March 2017.